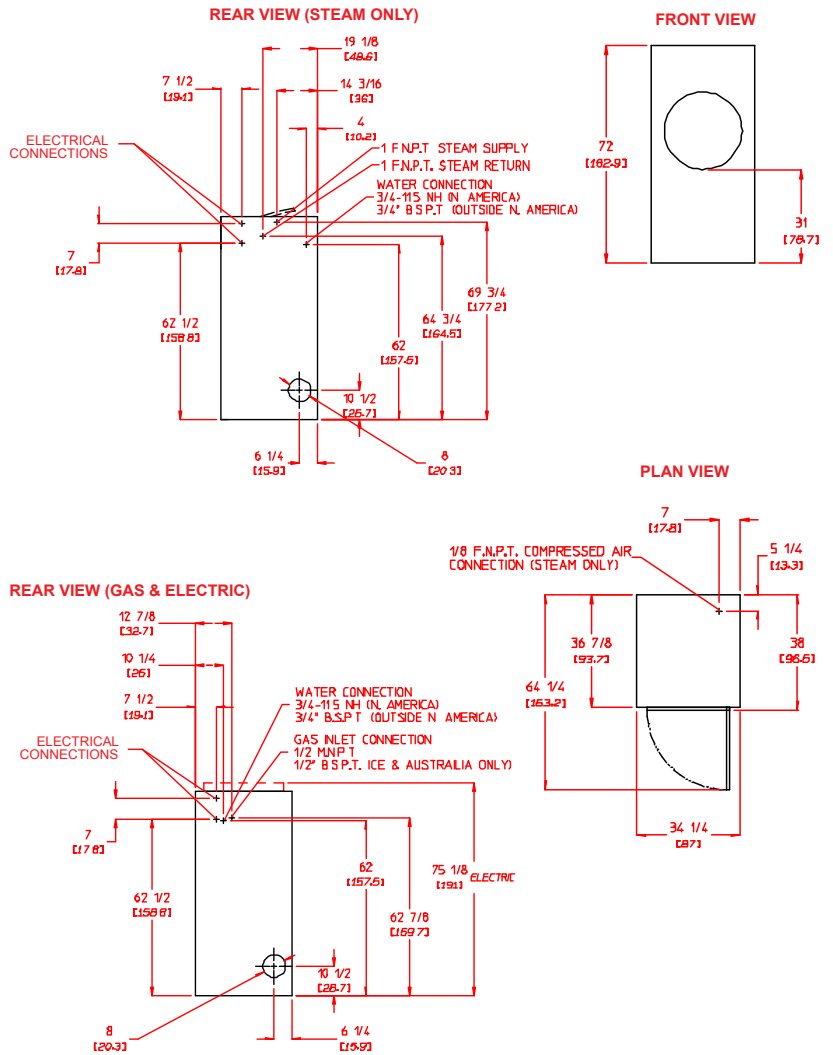


AD-30V Specifications

Tumbler Capacity (dry weight)	30 lbs. (13.6 kg)	
Tumbler Diameter	32-3/4" (83.2 cm)	
Tumbler Depth	25-5/8" (65.1 cm)	
Tumbler Volume	12.5 cu ft (353.9 L)	
Tumbler/Drive Motor (nonreversing/reversing)	1/2 hp (0.37 kW) / 1/2 hp (0.37kW)	
Blower/Fan Motor (nonreversing/reversing)	N/A / 1/2 hp (0.37kW)	
Door Opening (Diameter)	21-1/2" (54.61 cm)	
Door Sill Height	33-1/3" (84.15 cm)	
S.A.F.E. Water Connection	North America	3/4" F.N.P.T. (11.5 N.H.)
	Outside North America	3/4" B.S.P.T.
Dryers per 20'/40' Container	12 / 26	
Dryers per 48'/54' Truck	30 / 32	
Width	34-1/4" (87 cm)	
Depth	38" (96.5 cm)	
Height	72" (182.9 cm)	
Air flow - gas/electric/steam	60 Hz	460 cfm (13 cmm)
	50 Hz	383 cfm (10.85 cmm)
Exhaust Connection	8" (15.24 cm)	
GAS MODEL:	Approx. Net Wt.	534 lbs (242 kg)
	Approx. Ship Wt.	571 lbs (259 kg)
Inlet Pipe Connection	Heat Input	100,000 btu/hr (25,200 kcal/hr)
		1/2" M.N.P.T. (CE and Australia Only)
ELECTRIC MODEL:	Approx. Net Wt.	534 lbs (242 kg)
	Approx. Ship Wt.	571 lbs (259 kg)
Exhaust Connection	Oven Size	8" (20.32 cm)
STEAM MODEL:	Approx. Net Wt.	593 lbs. (269 kg)
	Approx. Ship Wt.	631 lbs. (286 kg)
Operating Steam Pressure	Steam Consumption	104 lb/hr (47.2 kg/hr)
	Exhaust Connection (Diameter)	125 psi max (8.6 bar)
Boiler Horsepower (Normal Load)	Supply Connection	3.0 Bhp
	Return Connection	1" F.N.P.T.
		1" F.N.P.T.



Specifications in parentheses are metric equivalents. 1/5/04
 ** Reversing dryer available with 3-phase (3ø) 1/2 hp (0.373kW) motor standard
 ***Specify air operated or electromechanical steam damper system. Air-operated steam damper system must be provided with clean, dry and regulated 80 psi ±0 psi (5.51 bar ±0.68 bar) air supply.

Electrical Service Specifications					
SERVICE VOLTAGE	PHASE	WIRE SERVICE	APPROX AMP DRAW	CIRCUIT BREAKER	
			60 Hz	50 Hz	
Single Phase Heat Single Phase Motor					
20 kW Electric					
208	1ø	2	102	--	150
220	1ø	2	82	81	125
230	1ø	2	84	84	125
240	1ø	2	88	88	125
24 kW Electric					
208	1ø	2	121	--	175
220	1ø	2	95	95	125
230	1ø	2	99	99	125
240	1ø	2	105	105	150
Three Phase Heat Single Phase Motor					
20 kW Electric					
208	3ø	3	61	--	80
220	3ø	3	49	49	70
230	3ø	3	50	50	70
240	3ø	3	53	53	70
380	3ø	4*	--	30	40
400	3ø	4*	--	30	40
416	3ø	4*	--	32	50
24 kW Electric					
208	3ø	3	72	--	100
220	3ø	3	57	56	80
230	3ø	3	58	59	80
240	3ø	3	63	62	80
380	3ø	4*	--	34	50
400	3ø	4*	--	35	50
416	3ø	4*	--	38	50

Electrical Service Specifications					
SERVICE VOLTAGE	PHASE	WIRE SERVICE	APPROX AMP DRAW	CIRCUIT BREAKER	
			60 Hz	50 Hz	
Three Phase Heat Three Phase Motor					
20 kW Electric					
208	3ø	3	59	--	80
220	3ø	3	48	49	70
230	3ø	3	--	50	70
240	3ø	3	51	52	70
380	3ø	3	29	28	40
400	3ø	3	--	29	40
416	3ø	3	--	30	40
460	3ø	4*	25	--	40
480	3ø	4*	26	--	40
24 kW Electric					
208	3ø	3	70	--	90
220	3ø	3	56	56	80
230	3ø	3	--	59	80
240	3ø	3	61	62	80
380	3ø	4*	34	33	50
400	3ø	4*	--	34	50
416	3ø	4*	--	36	50
460	3ø	4*	30	--	40
480	3ø	3	31	--	40
30 kW Electric					
208	3	3	88	--	--
220	3	3	73	75	--
230	3	3	--	76	--
240	3	3	78	80	--
380	3	4*	45	43	--
400	3	4*	--	44	--
416	3	4*	--	45	--
440	3	3	--	--	--
460	3	3	38	--	--
480	3	3	39	--	--
575	3	3	33	--	--

Electrical Service Specifications					
SERVICE VOLTAGE	PHASE	WIRE SERVICE	APPROX AMP DRAW	CIRCUIT BREAKER	
			60 Hz	50 Hz	
GAS & STEAM (non-reversing)					
120	1ø	2	8.7	--	15
208	1ø	2	5.5	--	15
220	1ø	2	4.5	3.9	15
230	1ø	2	3.2	3.5	15
240	1ø	2	4.8	4.6	15
208	3ø	3	3.1	--	15
220	3ø	3	3.1	3.9	15
230	3ø	3	--	3.5	15
240	3ø	3	3.3	4.2	15
380	3ø	4*	--	2.2	15
400	3ø	4*	--	2.2	15
416	3ø	4*	--	2.3	15
460	3ø	3	2.1	--	15
480	3ø	3	2.1	--	15

Electrical Service Specifications					
SERVICE VOLTAGE	PHASE	WIRE SERVICE	APPROX AMP DRAW	CIRCUIT BREAKER	
			60 Hz	50 Hz	
GAS & STEAM (reversing)					
208	3ø	3	5.0	--	15
220	3ø	3	5.2	6.8	15
230	3ø	3	--	6.2	15
240	3ø	3	5.6	7.4	15
380	3ø	3	5.4	3.4	15
400	3ø	4*	--	3.4	15
416	3ø	4*	--	3.5	15
460	3ø	4*	3.2	--	15
480	3ø	4*	3.2	--	15

