

Technical Bulletin

Number 192

November 5, 2010

Winter Break! with American Dryer Parts Special! from November 8, 2010 to December 31, 2010

P/N	DESCRIPTION	RETAIL PRICE	RETAIL SALE PRICE
132070	115/208/240-25v 87.5va Transformer	\$190.72	\$158.00
180050	SL20/31 2" Support Wheel	\$46.20	\$30.00
100073	1hp 115/208-230v 60hz 1ph	\$599.63	\$500.00
137005	SDS Door Switch	\$8.45	\$3.00
120093	4kW 240v 12-5/8" Element 1.1mm	\$65.34	\$50.00
883849	Fenwal Single Pocket DSI Module Kit	\$131.98	\$100.00

Electric Heating Elements

ADC now uses an improved heating element with a thicker wire in all of the AD line and medium line electrically heated dryers. Please see the cross reference chart below to verify what old part number heating element is replaced by the new part number heating element. All parts orders for heating elements are supplied with the new part number (old part number heating elements are no longer available).

Electric Element Cross-Reference Listing

ADC PART NUMBER		DESCRIPTION		
OLD	NEW*	KW	VOLTAGE	LENGTH (INCHES)
120007	120096	3	240	12-5/8"
120008	120097	4	208	12-5/8"
120009	120093	4	240	12-5/8"
120010	120098	4	208	22"
120011	120099	4	240	22"
120012	120090	5	208	22"
120013	120091	5	240	22"
120014	120095	6	240	22"
120015	120092	6	208	22"
120048	120094	4.5	240	12-5/8"

* Larger diameter coil wire.

New distributor on line parts ordering system

Distributors will now be able to order parts on line through the ADC web site. Dealers who wish to use the system must first contact Susan Epps in the Customer Service Dept. at 508-678-9000 ext.326 to register. Registration is a short process. You will be asked to provide an email address and password which will then be used to access our parts ordering site.

ADC Factory Rebuilt Computer Boards

PRICE CHANGE!!!

Get the assurance of a factory rebuilt board. Includes upgrades, enhancements and warranty.

- Phase 7 and Phase 8 computer boards \$155
 - All other boards \$95 (Both Single or Dual Boards)
- Includes return shipping via UPS ground (U.S. Only). No service charge for non-repairable boards

ADC's remanufactured program is for past microprocessor production controllers. This program requires that the core (failed out of warranty controller) must be returned to ADC first. No customer or reseller can call and place an order for remanufactured controllers. ADC must be in possession of the failed out of warranty controller (core) before any order can be processed. There are no exceptions.

For more details, contact our repair board support at 508-678-9000 ext. 130.

INSIDE

Replacement Back Draft	2
Changing Phase 8 Boards	2
Special Tools Available	2
Service Tip: "DSFL" Fault	3
LP Gas Valve Adjustment Screw	3
Obsolete Parts Available	3
Parts Price List	3
Reversing Contactor Conversion	4
DSI High Voltage Wire Notice	4
E-Mail Registration Form	4
Phase 8 Cross-Reference List	4
Returning Warranty Parts	5



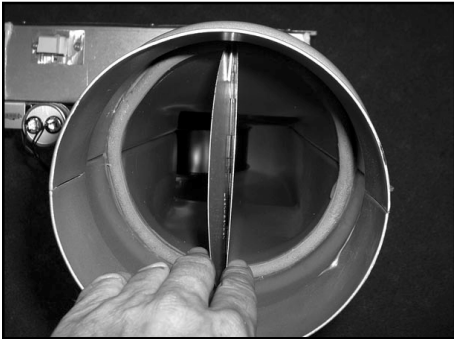
88 Currant Road
Fall River, MA
02720-4781
Telephone:
(508) 678-9000
Fax: (508) 678-9447

For more information, visit our web site at www.amdry.com or email: techsupport@amdry.com

Replacement Back Draft Dampers Now Available

Now available from ADC are replacement back draft damper kits (P/N 884379). These dampers are for use in the formed blower housing assembly that is used in the Solaris line. They are for use on blower housings with a 6 inch exhaust diameter.

The replacement kit includes blade flaps, spring, rod and instructions.



Special Tools Available

The following is a list of special tools ADC offers for purchasing. Please contact the parts department for pricing.

P/N 884241
320/330 Fan Leverage Tool
Part 884241 is used to hold the fabricated fans on the AD330/320's and also has a valve tail piece remover

P/N 883830
36E Valve Tailpiece Tool
Removes tail piece from gas valve only

P/N 882458
Tumbler Puller Assembly
Used to remove tumbler supports from dryer

P/N 320650
Belt Tool SL31 3131

P/N 887025
Belt Tool for SL20
Tool to help install a belt on the mentioned dryer

P/N 880712
Lint Blade Wrench Assembly
To help install a lint blade on a SL31, 3131, 2929,

P/N 100405
Jaw-Style Bearing Puller
Used for removing small bearings

P/N 883204
12-1/2" FAB Fan Puller Assembly
For removal of fabricated fans

P/N 122672
Extraction Tool for Mini-Fit
Used for Phase 7 square pins and sockets

P/N 122802
M-N-LO Contact Extraction Tool
Used for AD-330/320 back electrical box plugs

P/N 122800
M R Extraction Tool
Used for Phase 1 through Phase 5 computer pins

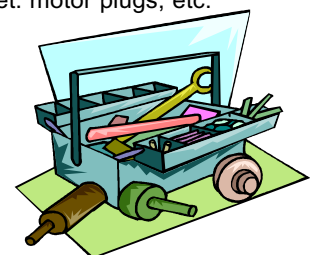
P/N 122801
Mate-N-Lock Extraction Tool
Used for door switch, temp sensor bracket, motor plugs, etc.

Changing parts supplied

Phase 8 Boards from Coin to OPL

All phase 8 boards sent out for parts orders are set to coin mode. If a phase 8 board is needed for an OPL machine the following procedure is required to change from coin mode to OPL mode.

- 1) Open the top panel by opening the door and removing the four screws below the bottom of the panel.
- 2) Locate the two orange wires with female spade connectors. The two wires are not connected to anything and are wire tied to the main harness. Connect the two wires together with a jumper wire or paper clip.
- 3) Once the wires are connected the computer board should beep and the display should show "service mode".
- 4) With the "service mode" displayed scroll down to "machine settings" (using the up and down arrows).
- 5) When machine setup is highlighted press the check mark button. It should display enter password.
- 6) Enter password by pressing the check mark button four times within 3 seconds. Machine menu should be displayed
- 7) Scroll down to #2 dryer type and press the check mark button.
- 8) It will display coin/free and OPL. Select OPL and press the check mark button.
- 9) Once this is done the display should change and give you 3 options. Now press the X button 2-3 times and it should change to the OPL start menu.
- 10) Remove the jumper wire or paper clip and reinstall top panel.

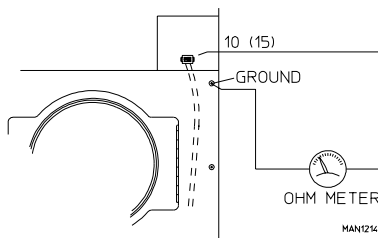
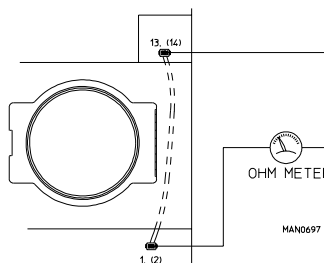
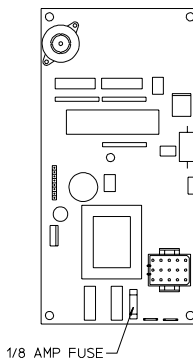




SERVICE TIP “DSFL” Fault

When the display reads “dSFL”, this condition indicates a fault in the microprocessor’s heat circuit. This circuit includes the microprocessor, the temperature sensor (located in the lint compartment) and the wire to and from these 2 points.

1. Check to see if the microprocessor has a 1/8 amp fuse on the board. If it does, check it with an ohm meter. If it has no continuity replace with ADC p/n 136048. If fuse repeatedly burns out proceed to step 4.
2. Check for loose connections at the temperature sensor bracket harness connector (located on lint compartment), and the 15 position connector at the microprocessor.
3. Discontinue power to the dryer. Disconnect the 15 position connector from the microprocessor and locate connector holes no. 10 and 15. Disconnect sensor harness from sensor bracket assembly (located in lint compartment). Check for continuity across each wire from harness connector in lint compartment to appropriate 15 position connector holes (10 and 15). If no continuity, problem is break in wire or termination.
4. Check for continuity across each temperature sensor wire (15 position connector holes no. 10 and 15) to ground. If continuity is evident, problem is wire pinched to ground somewhere behind the front panel area.
5. If above procedures check out okay, problem is a defective temperature sensor.



Parts Price List

Our current Parts Price List (ADC P/N 451000) has a June 1, 2010 effective date, and is available to be downloaded for free from our web site, www.amdry.com. As with previous parts price lists, it's also available on our ADC Publications CD (ADC P/N 882206). Printed copies of the June 2010 Parts Price List is available through normal parts order channels at a net price of \$12.00 each.

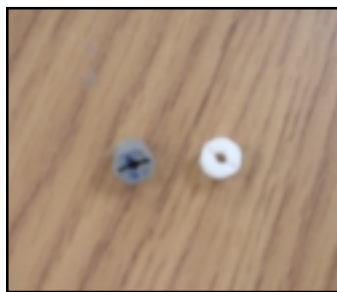
The Parts Price List is updated at least once a year.

IMPORTANT

- \$ Prices are subject to change without notice. The prices on the invoice may not necessarily be the same as the prices shown on the Parts Price List.
- \$ Formal (written) quotes will be valid for thirty days. When submitting parts orders in which a formal quote was issued, the quotation number must be provided at the time or the quote will not be valid.
- \$ Verbal quotes are not binding and will not be honored.

LP Gas Valve Adjustment Screw

ADC has replaced the 128927 gas valve that had been used on a majority of dryers. The replacement valve comes as a natural gas valve or liquid propane valve, see conversion chart in tech bulletin number 191 dated February 16, 2010 for part numbers.



If the natural gas valve needs to be converted in the field to LP, you may need to replace the gas valve adjustment screw. Some of the natural gas valves were made with a gray colored adjustment screw that does not have the opening for the spring and pin to convert to LP (see picture). The gas valve adjustment screw with the hole is white in color and the part number is 141145. See picture for comparison of both screws. When replacing the adjustment screw, 1- remove the brass sealing cap on the top of the valve, 2- remove the gray colored adjustment screw, 3- install the new white adjustment screw with the hole. Continue according to the LP conversion instructions.

Obsolete Parts Available

American dryer has released a number of obsolete parts for sale at a discounted price. Higher discounts are available for purchasing of high volumes. The following is a small sample of parts that are available. Please contact parts dept for a full list of parts that are available.

- 140004 120V 3/8" GAS VALVE
- 140009 120V HI/LO 3/8" GAS VALVE
- 100621 MOTORIZED IMPELLOR - SL20 120V
- 100636 MOTORIZED IMPELLOR - SL31 120V
- 131812 PUSH TO START RELAY 110V
- 131917 PUSH-TO-START RELAY, 24VAC
- 137139 540 COMPUTER BRD PH5
- 112567 AD330 HANKE DUAL COIN KEYPAD
- 136989 HUMIDITY SENSOR W/MEMBR.FILTER
- 128930 DSI MODULE - SINGLE TRY MODULE
- 170195 320/330 DRIVE BLT SEALING BRSH
- 125103 .882 X .062 TOKEN ACPTR W O/S

Reversing Contactor P/N 132497 Conversion

Reversing contactor (part number 132497) is being phased out, the new replacement contactor kit part number is 882386. The kit includes the replacement contactor, mounting hardware and instructions. If auxiliary contactors are needed the matching ones are part number 131391. If an overload is needed please contact the factory for the proper one and have the model and serial number available. You must use these auxiliary contactors and overload with this kit, the contacts and overloads from the 132497 will not mount to the new contactor.



REVERSING CONTACTOR



AUXILIARY CONTACTOR

Direct Spark Ignition High Voltage Wire Notice

When replacing your direct spark ignition to the new Fenwal (gray) module please make sure to also change the High Voltage wire. The new H.V. Noise Suppression wire (gray) is included in all conversion kits.

The old silicon (orange/red) wire should not to be used in conjunction with this new Fenwal (gray) module.

CAUTION: If this new (gray) wire is not used the computer board/DSI module will sustain electrical noise damage and this will void your parts warranty on new computer boards/DSI modules purchased!

The Gray H.V. wires will be listed below for all machines

All single models use part number*	884279
* Except AD-26 and 295	
AD-220,230,235,236,320,330,430,435	829998
436, 530	
AD/SL-20, CG-20, STI-8	
AD-26 and 295	
AD-360, 360X2RD, 540	884141

E-Mail Registration Form

American Dryer Corporation currently distributes the Technical Bulletin updates via e-mail. This technology enables us to send updates to specific individuals who wish to receive the Technical Bulletin. Please feel free to submit as many names for our e-mail file as you wish.

We are asking all of our customers with e-mailing capabilities to fill out the following form with the e-mail addresses of the individual staff members who should receive the Technical Bulletin. After filling out the form below, please fax the form back to American Dryer Corporation at (508) 678-9447 or e-mail the following information to: techregis@amdry.com.

Each Technical Bulletin will be sent as an e-mail attachment. Acrobat Reader must be installed on your computer in order to view and print the file. Acrobat reader can be downloaded for free from our website:

<http://www.amdry.com/service/techbulletins/index.asp>.

Name: _____

Company _____

Position: _____

E-Mail: _____

Phase 8 (Single Pocket Dryer) MP Cross-Reference List

The listing below is for single pocket dryers (coin and non-coin [OPL]) made with the Phase 8.3 and Phase 8.1 computer boards.

NOTE: The serial number should be verified to determine if dryer was manufactured with optional "S.A.F.E." or "F.S.S."

PHASE 8.3 SINGLE DRYER BOARD P/N 137276 OR P/N 137279

APPLICATION	ADC P/N
Dryers manufactured without "S.A.F.E." or "F.S.S."	887092
Dryers manufactured with "S.A.F.E."	887093
Dryers manufactured with "F.S.S."	887094

PHASE 8.1 MAYTAG COIN SINGLE POCKET UNITS ADC P/N 137272 AND 137277

APPLICATION	ADC P/N
MAYTAG coin without "S.A.F.E."	887101
MAYTAG coin with "S.A.F.E."	887100

Phase 8 (Stack Dryer) MP Cross-Reference List

The listing below is for stack dryers (coin and non-coin [OPL]) made with the Phase 8.4 and Phase 8.2 computer boards.

NOTE: The serial number should be verified to determine if dryer was manufactured with optional "S.A.F.E." or "F.S.S."

PHASE 8.4 STACK DRYER BOARD P/N 137280 OR P/N 137274

APPLICATION	ADC P/N
Dryers manufactured without "S.A.F.E." or "F.S.S."	887102
Dryers manufactured with "S.A.F.E."	887103
Dryers manufactured with "F.S.S."	887104

PHASE 8.2 MAYTAG STACK DRYER BOARD P/N 137264, P/N 137265, OR P/N 137275

APPLICATION	ADC P/N
MAYTAG coin without "S.A.F.E."	887106
MAYTAG coin with "S.A.F.E."	887107

Returning Warranty Parts to American Dryer Corp.

All dryer or warranty claims or inquires should be addressed to the ADC Warranty Parts Department.

Warranty Manager
Ron Desmarais
Tel.: (508) 678-9000, ext. 158
Fax: 508-324-9449
E-mail: rnd@amdry.com

To expedite processing, the following procedures must be followed. Each part must be tagged with the following information:

- Model number and serial number of the dryer from which part was removed.
- Nature of failure (be specific).
- Date of dryer installation.
- Date of part failure.
- Specify whether the part(s) being returned is for a replacement or a credit.

If a part is marked for a credit, the invoice number covering the purchase of the replacement part must be provided.

Warranty tags (ADC Part No. 450064) are available at "no charge" from ADC upon request.

The company returning the parts must clearly note the complete company name and address on the outside of the package.

All returns must be properly packaged to insure that they are not damaged in transit. Damage claims are the responsibility of the shipper.

IMPORTANT

No replacements or credits will be issued for merchandise damaged in transit.

All returns should be shipped to the ADC factory in such a manner that they are insured and a proof of delivery can be obtained by the sender.

Shipping charges are not the responsibility of ADC. All returns should be "prepaid" to the factory. Any "C.O.D." or "COLLECT" returns will not be accepted.

IMPORTANT

No replacements or credits will be issued if the claim cannot be processed due to insufficient information. The party filing the claim will be notified in writing, either by "FAX" or "CERTIFIED MAIL - Return Receipt Requested," as to the information necessary to process claim. If reply is not received by the ADC Warranty Department within seven days from the FAX/letter date, then no replacement or credit will be issued, and the merchandise will be discarded.

Return Warranty Tag

Your Own Reference Number _____

Date: _____

Company or Individual Returning Part(s) _____

Address _____

City _____

State _____ Zip _____

Telephone No. _____

END USER INFORMATION:

Company Name _____

Contact Name _____

Address _____

City _____

State _____ Zip _____

Telephone No. _____

Item P/N: _____

Part Description _____

Dryer Serial # _____

Nature of Defect _____

RETURNED FOR:

Replacement Credit (Invoice No. _____)

PARTS WARRANTY:

Date of Installation _____

Date of Failure _____