

Technical Bulletin

NUMBER 193

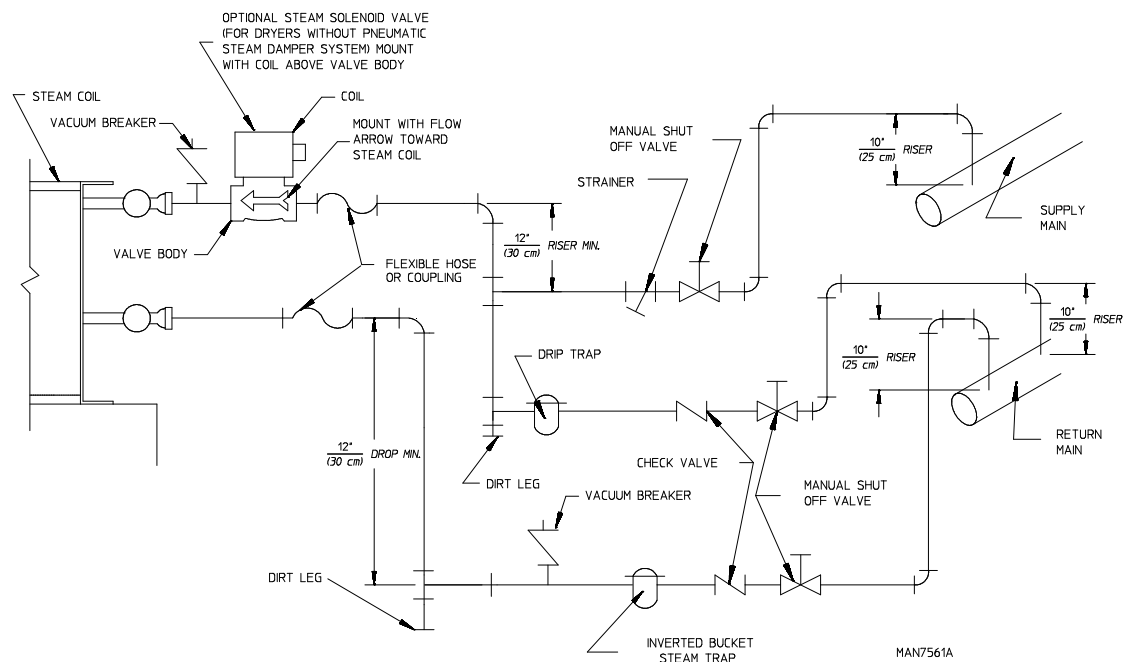
December 22, 2014

Steam Coil Change

On January 2, 2015, due to a change in the vendor supplying steam coils the design of the **copper** steam coils currently being used on ADC dryers will change. Working with our distributors, feedback from end users and the vendor of the steam coil we will go back to a design that requires only one trap on the outlet. Please review a current installation manual or contact ADC's Technical Support at (508) 678-9000 or techsupport@amdry.com for detailed instructions. The installation manuals will be available via the web site <http://www.adclaundry.com/manuals/index.cfm> Jan 2, 2015.

From:
 165079 75/82 TWO STAGE STEAM COIL
 165080 115/120 TWO STAGE STEAM COIL
 165078 170/175/190 2 STAGE STEAM COIL

To:
 165090 75/82 GEN 3 STEAM COIL
 165091 115/120 GEN 3 STEAM COIL
 165092 170/175/190 GEN 3 STEAM COIL



STEAM INSTALLATION REQUIREMENTS

	INLET SIZE ONE AT TOP MANIFOLD	OUTLET SIZE ONE AT BOTTOM MANIFOLD
ADS-758	1"	1"
ADS-115	1 1/4"	1 1/4"
ADS-120	1 1/4"	1 1/4"
D120	1 1/4"	1 1/4"
ADS-170	1 1/2"	1 1/2"
D170	1 1/2"	1 1/2"

Continued on next page



88 Currant Road
 Fall River, MA
 02720-4781
 Telephone:
 (508) 678-9000
 Fax: (508) 678-9447

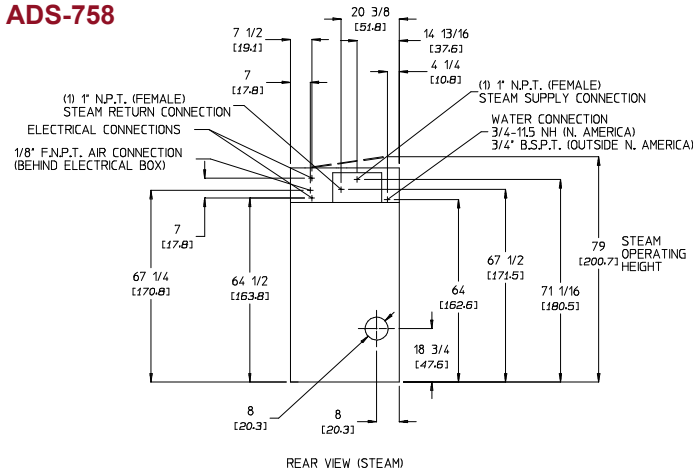
For more information, visit our web site at www.adclaundry.com or email: techsupport@amdry.com

**Steam Consumption
Approximate**

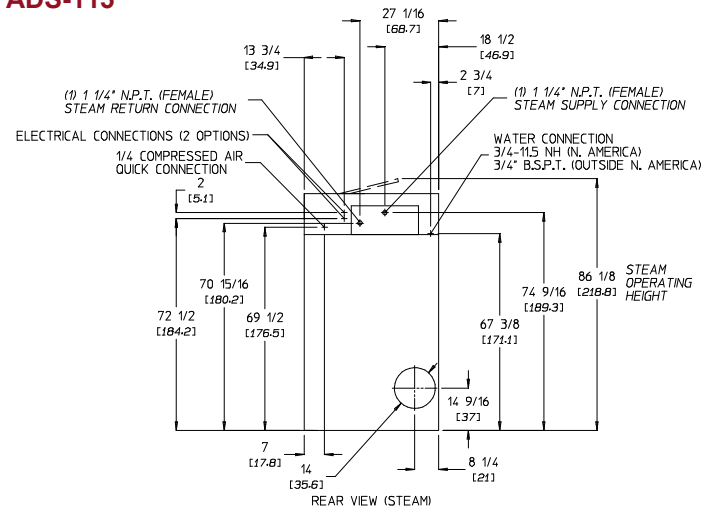
**Outlet Inverted
Bucket Trap Capacity**

ADS-758	275 lb/hr 124.7 kg/hr	600 lb/hr 272.2 kg/hr
ADS-115	365 lb/hr 165.6 kg/hr	730 lb/hr 331.1 kg/hr
ADS-120	365 lb/hr 165.6 kg/hr	730 lb/hr 331.1 kg/hr
D120	450 lb/hr 204.1 kg/hr	900 lb/hr 408.2 kg/hr
ADS-170	520 lb/hr 235.9 kg/hr	1040 lb/hr 471.7 kg/hr
D170	520 lb/hr 235.9 kg/hr	1040 lb/hr 471.7 kg/hr

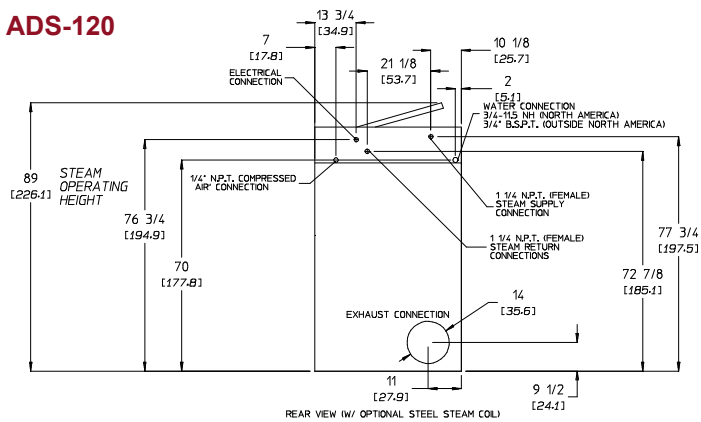
ADS-758



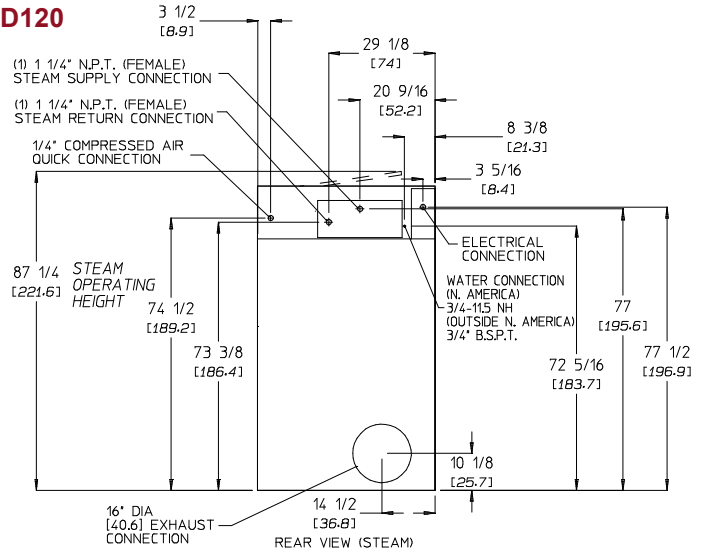
ADS-115



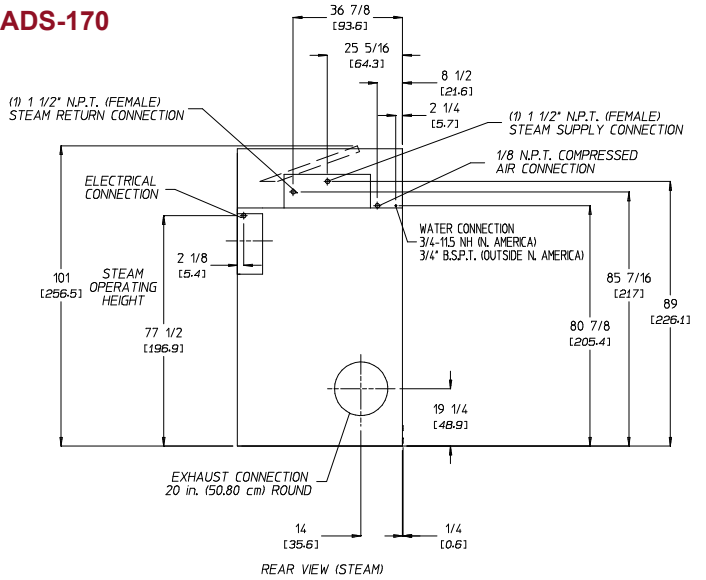
ADS-120



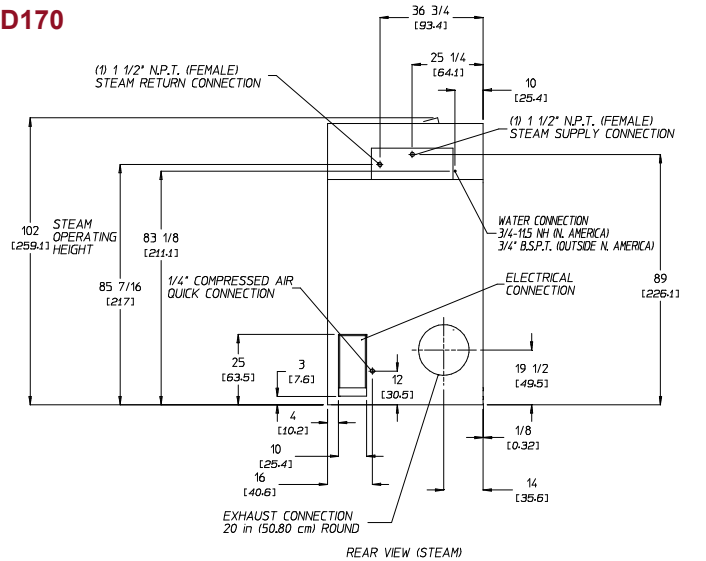
D120



ADS-170



D170



Changing Phase 8.3 and 8.4 Board from Coin to OPL

NOTE: If the dryer is a non-coin / OPL unit and is set to coin or free mode, it will be necessary to Jumper the 2 orange / silver wires with white insulated terminals found in the wire bundle behind the computer board, see picture on page 2 this will automatically set the board into program mode.

To enter program mode insert the key into lock and turn clockwise

- Next push (low) key / down arrow and select machine setup, then push (med) / check key once.
- The system will now ask for a password, press the (med) / check key 4 times.
- Next use the (low) key / down arrow and select dryer type, then push (med) / check key once.
- Next use (low) key / down arrow and choose OPL, then press (med) / check key once.
- Next press (pause) / X key several times to exit programming, then remove program key.

NOTE: If you needed to jumper the 2 orange wires now remove the jumper.

Example of Jumper Wire Locations



Coin Boxes Faceplate Change

To improve the security of the 125917 UG-400B COIN BOX and the 125918 \$150 COIN BOX the supplier of this product has changed the faceplate. All dryer and parts orders will now be supplied with the new design of the coin box.

New Design



Old Design



Keypads

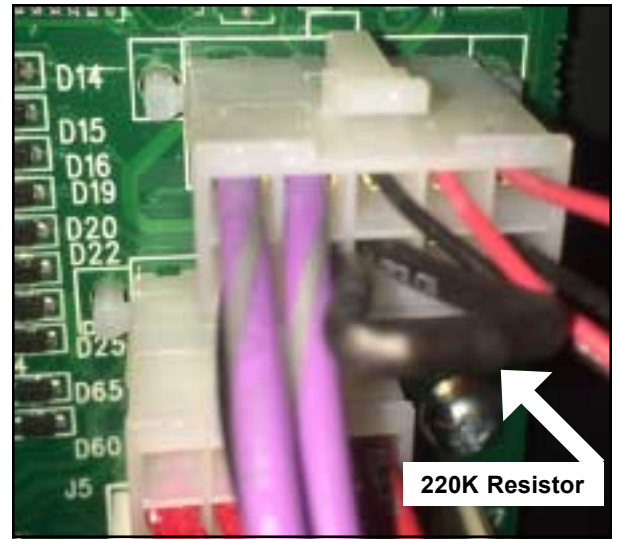


Look to ADC when you're looking to outfit your facility with commercial drying products

Axial probe fault on Radial dryer

On Axial airflow dryers (airflow back to front) there is RTD (Resistance Temperature Detector) which monitors the heat going into the back of the basket. Where on the Radial airflow dryers (airflow top to bottom) there is no need for an RTD so it is then replaced with a 220,000 (220k) ohm resistor. There have been a few instances where the resistor was physically broken and no longer conducted this will cause the dryer to stop operating and display an Axial Probe fault. The way you test this resistor is between pins 3 & 4 on J3 (Phase 7.2.2 OPL) or J4 (Phase 7.3.2 Coin) with the connector removed from the computer on the harness side must measure 220k Ω .

Another scenario for causing the fault is if the 24 VAC powering up the Phase 7 computer goes below 20 VAC the computer will display an Axial Probe fault.



2014 Holiday Schedule

ADC will be CLOSED on
Thursday, December 25 and Friday, December 26

We will resume Monday, December 29

ADC will be OPEN on December 31
and CLOSED for New Year's Day on January 1

We will resume Friday, January 2

Returning Warranty Parts to American Dryer Corp.

All dryer or warranty claims or inquires should be addressed to the ADC Warranty Parts Department.

Warranty Department
Tel.: (508) 678-9000, Ext. 158
Fax: 508-324-9449
Email: Warranty@amdry.com

To expedite processing, the following procedures must be followed. Each part must be tagged with the following information:

- Model number and serial number of the dryer from which part was removed.
- Nature of failure (be specific).
- Date of dryer installation.
- Date of part failure.
- Specify whether the part(s) being returned is for a replacement or a credit.

If a part is marked for a credit, the invoice number covering the purchase of the replacement part **MUST** be provided.

Warranty tags (ADC Part No. 450064) are available at "no charge" from ADC upon request.

The company returning the parts must clearly note the complete company name and address on the outside of the package.

All returns must be properly packaged to insure that they are not damaged in transit. Damage claims are the responsibility of the shipper.

IMPORTANT


No replacements or credits will be issued for merchandise damaged in transit.

All returns should be shipped to the ADC factory in such a manner that they are insured and a proof of delivery can be obtained by the sender.

Shipping charges are not the responsibility of ADC. All returns should be "prepaid" to the factory. Any "C.O.D." or "COLLECT" returns will not be accepted.

IMPORTANT

No replacements or credits will be issued if the claim cannot be processed due to insufficient information. The party filing the claim will be notified in writing, as to the information necessary to process claim. If reply is not received by the ADC Warranty Department within seven days from the notification date, then no replacement or credit will be issued, and the merchandise will be discarded.



Return Warranty Tag

Your Own Reference Number _____

Date: _____

Company or Individual Returning Part(s) _____

Address _____

City _____

State _____ Zip _____

Telephone No. _____

END USER INFORMATION:

Company Name _____

Contact Name _____

Address _____

City _____

State _____ Zip _____

Telephone No. _____

Item P/N: _____

Part Description _____

Dryer Serial # _____

Dryer symptom _____

RETURNED FOR:

Replacement Credit (Invoice No. _____)

PARTS WARRANTY:

Date of Installation _____

Date of Failure _____