

AD 80i

80-lb Capacity Coin Dryer

Standard Features:

- Variable drum speed
- Pre-heat system
- Trans-axial air flow
- Fully insulated cabinet
- Self cleaning lint screen
- Direct spark ignition
- Two point roller support
- "IMC®" intuitive micro control with auto dry system
- Single Phase Reversing Basket
- Stainless Steel basket and fronts
- Simplified Inverter Drive System
- Available in gas, electric & steam

Optional Features:

- Double pane door glass
- S.A.F.E.- Sensor Activated Fire Extinguishing System
- Automatic Airflow Compensator (AAFC)

Optional AAFC adjusts exhaust fan speed to improve exhaust flow with increased back pressure caused by installation issues. This exclusive patented technology adjusts fan speed and enhances dryer performance. Measurements are calculated in real-time, on an ongoing basis to optimize dry-times and efficiency.

Why Purchase AD 80i?

Performance

The Achievement: Through innovative design the i-series dryers achieve higher performance, industry leading efficiency, shorter dry times and safer, more reliable operation. What an owner wants, an owner gets: saving money on utilities, payroll, and maintenance. Anyone can say their dryers have the best performance. The Intelligent Dryer Series has the features to prove it.

Reliability

Demanding owners require more than just outstanding performance for their toughest laundry environments. To accommodate owners, we designed the i-series with years of reliable operation as an absolute design necessity. A sturdy steel welded cabinet, fewer moving parts and top quality components are the foundation of the line. Costly repairs and unwanted down time are now a thing of the past.

IMC- Intuitive Micro Controls is easy to use and 100% customizable.

The IMC is an intelligent and simple to use control system that provides one-touch program selection.

By creating a fully integrated drying system, ADC utilizes IMC to control all aspects of the drying process to minimize user error and maximize drying speed and efficiency.



AD 80i Coin Dryer

Your local ADC independent authorized distributor

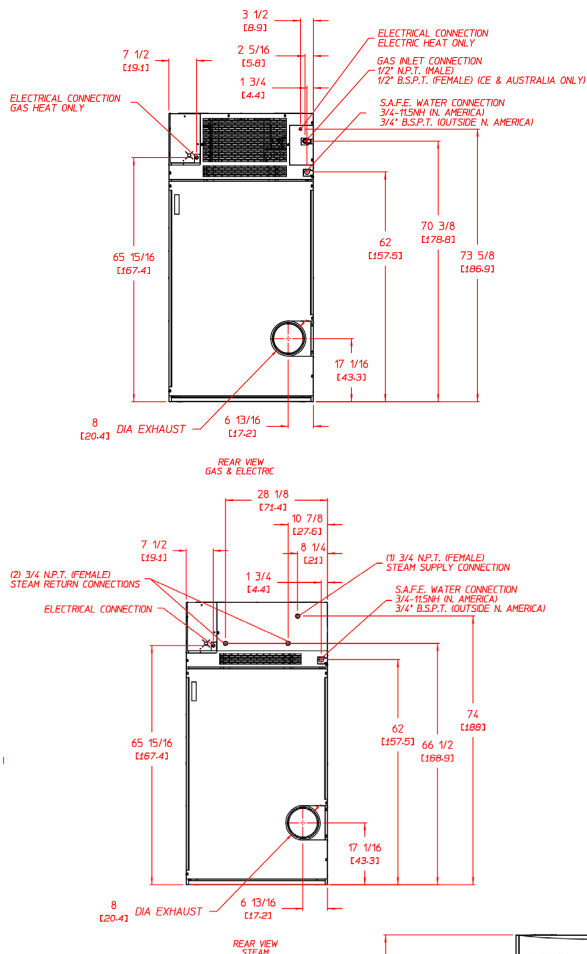


www.adclaundry.com

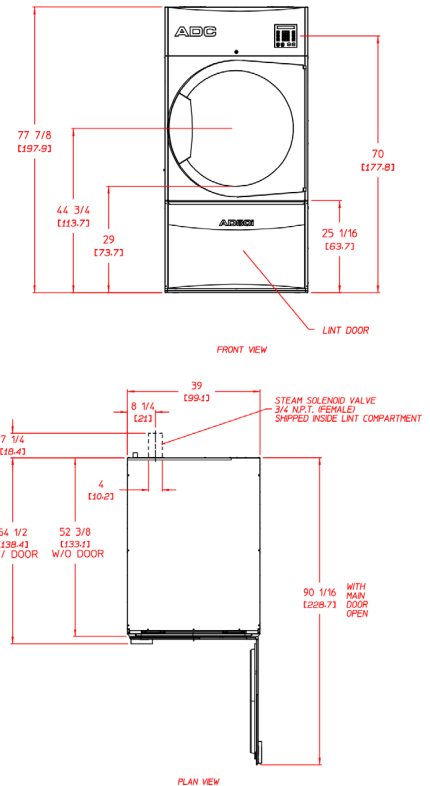
AD 80i

AD-80i Specifications

		80 lb	36.28 kg	
Maximum Capacity (dry weight)		80 lb	36.28 kg	
Tumbler Diameter		37"	93.98 cm	
Tumbler Depth		35-7/16"	90.01 cm	
Tumbler Volume		22.05 cu ft	624.39 L	
Tumbler / Drive Motor		1 hp	0.74 kW	
Blower / Fan Motor*		3/4 hp	0.56 kW	
Cabinet Width		39"	99.06 cm	
Cabinet Depth		52-3/8"	133.03 cm	
Cabinet Height		77-7/8"	197.80 cm	
Door Opening (diameter)		31-3/8"	79.69 cm	
Door Sill Height		29"	73.66 cm	
Water Connection		3/4"-11.5 NH (North America) 3/4" B.S.P.T. (Outside North America)		
Dryers per 20'/40' Container		8 / 16		
Dryers per 48'/53' Container		22 / 26		
GAS MODEL	Voltage Available	120-480V	1,3ø 2,3w 50/60 Hz	
	Approximate Net Weight	700 lb	317.52 kg	
	Approximate Shipping Weight	720 lb	326.59 kg	
	Airflow	50 Hz	880 cfm	24.91 cmm
		60 Hz	920 cfm	26.05 cmm
	Heat Input	135,000 Btu/hr		34,019 kcal/hr
ELECTRIC MODEL	Exhaust Connection (diameter)	8"		20.32 cm
	Inlet Pipe Connection	1/2" N.P.T. (Male)		
	Voltage Available	280-480V 1,3ø 2,3,4w 50/60 Hz		
	Approximate Net Weight	710 lb		322.05 kg
	Approximate Shipping Weight	730 lb		331.12 kg
	Airflow	50 Hz	770 cfm	21.80 cmm
	60 Hz	740 cfm	20.95 cmm	
STEAM MODEL	Exhaust Connection (diameter)	8"		20.32 cm
	Oven Size	kW	Btu/hr	kcal/hr
		22	75,067	18,917
		20.4	69,608	17,541
		18.5	63,125	15,907
	Voltage Available	120-480V 1,3ø 2,3w 50/60 Hz		
Approximate Net Weight	830 lb		376.48 kg	
Approximate Shipping Weight	865 lb		392.36 kg	
Airflow	50 Hz	854 cfm	24.18 cmm	
	60 Hz	1,025 cfm	29.02 cmm	
Steam Consumption (Max)	140 lb/hr		63.50 kg/hr	
Operating Steam Pressure	150 psi 10.34 bar			
Exhaust Connection (Diameter)	8"			
Boiler Horsepower (Normal Load)	3.6 Bhp			
Supply Connection	(1) 3/4" N.P.T. (Female)			
Return Connection	(2) 3/4" N.P.T. (Male)			



* If configuration ordered is 1ph motor, 3ph heat dryer will be 4w.



* Blower / fan motor for single phase steam is 1 hp (0.75 kW). Blower / fan motor for 3-phase, all heat, is 1 hp (0.75 kW).

Electrical Service Specifications

SERVICE VOLTAGE	PHASE	WIRE SERVICE	GAS HEAT		CIRCUIT BREAKER
			APPROX AMP DRAW 60 Hz	50 Hz	
120	1ø	2	9.8	--	15
208	1ø	2	10	--	15
220	1ø	2	5	5	15
230	1ø	2	5	5	15
240	1ø	2	5	5	15
208	3ø	3	4.45	--	15
220	3ø	3	8.35	4.45	15
230	3ø	3	8.35	4.45	15
240	3ø	3	8.35	4.45	15
380	3ø	3	--	2.73	15
400	3ø	3	--	2.73	15
416	3ø	3	--	2.73	15
440	3ø	3	4.53	--	15
460	3ø	3	4.53	--	15
480	3ø	3	4.53	--	15

Electrical Service Specifications

SERVICE VOLTAGE	PHASE	WIRE SERVICE	kW	ELECTRIC HEAT		CIRCUIT BREAKER
				APPROX AMP DRAW 60 Hz	50 Hz	
SINGLE PHASE HEAT SINGLE PHASE MOTOR						
208	1ø	2	22	116.1	--	150
220	1ø	2	18.5	94.0	89.0	125
230	1ø	2	20.4	98.6	93.6	125
240	1ø	2	22	101.7	93.6	150
THREE PHASE HEAT SINGLE PHASE MOTOR						
208	3ø	3	22	71.4	--	90
220	3ø	3	18.5	58.5	53.4	70
230	3ø	3	20.4	62.2	56.1	80
240	3ø	3	22	63	57.8	80
380	3ø	3*	18.5	--	34.7	50
400	3ø	3*	20.4	--	36.1	50
416	3ø	3*	22	--	37.2	50
THREE PHASE HEAT THREE PHASE MOTOR						
208	3ø	3	22	69	--	90
220	3ø	3	18.5	57	55	80
230	3ø	3	20.4	60	58	80
240	3ø	3	22	61	59	80
380	3ø	3	18.5	--	33	50
400	3ø	3	20.4	--	34	50
416	3ø	3	22	--	35	50
440	3ø	3	18.5	29	--	40
460	3ø	3	20.4	30	--	40
480	3ø	3	22	31	--	40



88 Currant Road Fall River, MA 02720-4781 • 508.678.9000 • Fax: 508.678.9447 • Email: sales@amdry.com

P/N 450494 06/15